

YP PROTAINER® YP Procenter A Instruction Manual

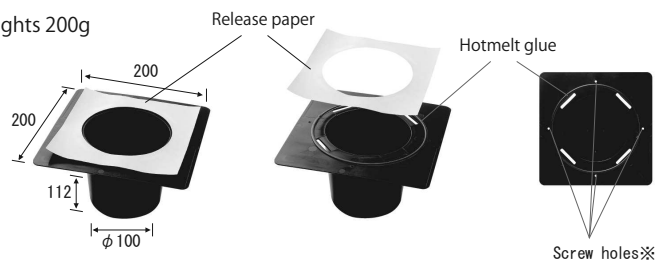
Safety and General Precautions

Users of the YP PROTAINER® must observe the following precautions and safe handling ; practices.

- **Always use YP Procenter A together with YP Procorner A. YP Procenter A is the central support for YP Procorner A.**
- Pay special attention to safety measures (hard hat, safety goggles, protective glove, safe shoes) and only trained and authorized personnel are to handle the YP PROTAINER®.
- Do not stack the cargos in an unstable condtion.Take masures to prevent the cargos to collapse.
- We strongly recommend to always use polyester bands when handling cargo with the YP PROTAINER®.
- YP PROTAINER® is designed for one way use not for reuse purpose. Always inspect YP PROTAINER® before use, do not use damaged YP PROTAINER®.
- YP PROTAINER® are made of polypropylene. Do not place YP PROTAINER® near flame or in areas of temperatures over 100°C. Do not use volatile solvents like benzine and thinner and chemical duster.
- YP PROTAINER® should be stored in a dry, clean warehouse environment. Do not store temperatures below 0°C.
- Do not give strong shock to YP PROTAINER® with a hammer. Do not push the corrugated cardboard box by forklift.
- Do not throw the tray with YP PROTAINER® violently.
- Once the YP PROTAINER® gets uninstalled, the adherent properties of the hotmelt glue will decrease noticeably so please be cautious.
- It is very important that you distribute the cargo evenly so each YP PROTAINER® supports the same amount of weight.
- Make sure you use bubble wrap in between the upper side cap and the cargo inside so there are no gaps left.
- If by any chance a polyester band gets off while on the job, please make sure you put it back in place.
- YP PROTAINER® should be used within 6 months after purchase.

YP Procenter A (Made of polypropylene)

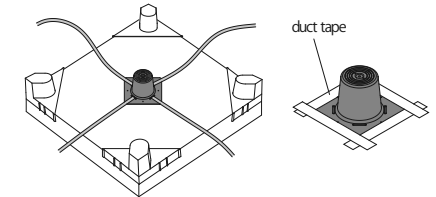
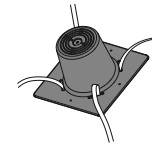
A unit weights 200g



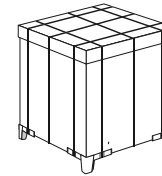
※ M4 pan head screws are recommended according to the thickness of the plywood.

How to Use YP Procenter A

- 1** Both polyester bands should be pre-cut. The second step is to thread the polyester bands through the slits.
- 2** Attach the YP Procenter A by the hotmelt glue to a corrugated card board tray. It can be reinforced by attaching the duct tapes.



- 3** Securely tighten by the polyester bands. There are totally 6 bands are recommended.



In case the polyester band is broken

- 1** If by any chance a band gets off while on the job, please make sure you put it back in place.
- 2** Please detach the band if it gets cut off.
- 3** Once the YP Procenter A gets uninstalled, the adherent properties of the hotmelt glue will decrease noticeably so please be cautious.
- 4** Set the polyester band on the outer side of the legs and fasten it with a binding tool.
- 5** If you don't have a polyester band, you can use a polypropylene band instead.



YP PROTAINER® WEB SITE
<https://www.ypcjp.com/>



YP PROTAINER® Official Channel



POST CODE:538-0052
5-6-34 Yokozutsumi, Tsurumi-ku Osaka, JAPAN
TEL: +81-6-6914-2828 FAX: +81-6-6914-2838

ESK-002E BAA